



## cairo

### TECHNICAL STANDARDS

Description	ASTM	ANSI	Result
Water Absorption	C-373	≤ 3%	≤ 0.5%
Break Strength (lbs.)	C-648	≥ 250 lbs	Min. 350 lbs
Scratch Hardness	MOH's Scale	N/A	7
Chemical Resistance	C-650	Unaffected	Unaffected
Frost Resistance	C-1026	Resistant	Resistant
Group	C-1027	N/A	4
Minimum Bond Strength (PSI)	C-482	≥ 50 lbs	Approx. 260
Shade and Texture Rating	V	N/A	V4
Coefficient of Friction/ Dry	C-1028	Varies	≥ 0.70
Coefficient of Friction/ Wet	C-1028	Varies	≥ 0.60

### AVAILABLE TRIM

Trim	Wall						Floor
	Quarter Rd	QR Angle	V-Cap	VC Corner	Bullnose	BN Corner	Bullnose
Size	3/4 x 6	3/4 x 3/4	2 x 6	2 x 2	6 x 6	6 x 6	3 x 12
Ancient Stone	LFCI510-A106	LFCI510-AC106	LFCI510-A8262	LFCI510-AC8262	LFCI510-S4669	LFCI510-SN4669	LFCI510-S43C9
Copper	LFCI511-A106	LFCI511-AC106	LFCI511-A8262	LFCI511-AC8262	LFCI511-S4669	LFCI511-SN4669	LFCI511-S43C9
Graystone	LFCI512-A106	LFCI512-AC106	LFCI512-A8262	LFCI512-AC8262	LFCI512-S4669	LFCI512-SN4669	LFCI512-S43C9
Sand	LFCI513-A106	LFCI513-AC106	LFCI513-A8262	LFCI513-AC8262	LFCI513-S4669	LFCI513-SN4669	LFCI513-S43C9
Cinnabar	LFCI514-A106	LFCI514-AC106	LFCI514-A8262	LFCI514-AC8262	LFCI514-S4669	LFCI514-SN4669	LFCI514-S43C9

### PRODUCT CHARACTERISTICS

- Rustic Style
- Environmentally Friendly Alternative to Natural Stone
- Easy to Clean and Maintain

### APPLICATIONS

- Designed for Use in Floor and Wall Applications
- Wide Selection of Trim Pieces for Interior Decoration
- Ideal for Commercial/Residential Applications

cairo

GLAZED PORCELAIN



ANCIENT STONE



18 x 18 (17 1/2 x 17 1/2) LFCI510-18  
12 x 12 (11 3/4 x 11 3/4) LFCI510-12  
6 x 6 (5 7/8 x 5 7/8) LFCI510-6



Border  
6 x 18  
LFCI510-B

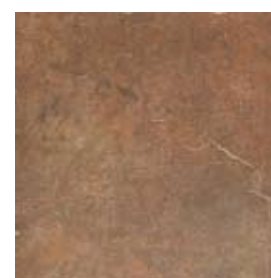


Insert/Corner  
6 x 6  
LFCI510-IC



Listel  
2 x 6  
LFCI510-L

COPPER



18 x 18 (17 1/2 x 17 1/2) LFCI511-18  
12 x 12 (11 3/4 x 11 3/4) LFCI511-12  
6 x 6 (5 7/8 x 5 7/8) LFCI511-6



Border  
6 x 18  
LFCI511-B



Insert/Corner  
6 x 6  
LFCI511-IC



Listel  
2 x 6  
LFCI511-L

GRAYSTONE



18 x 18 (17 1/2 x 17 1/2) LFCI512-18  
12 x 12 (11 3/4 x 11 3/4) LFCI512-12  
6 x 6 (5 7/8 x 5 7/8) LFCI512-6



Border  
6 x 18  
LFCI512-B



Insert/Corner  
6 x 6  
LFCI512-IC



Listel  
2 x 6  
LFCI512-L

SAND



18 x 18 (17 1/2 x 17 1/2) LFCI513-18  
12 x 12 (11 3/4 x 11 3/4) LFCI513-12  
6 x 6 (5 7/8 x 5 7/8) LFCI513-6



Border  
6 x 18  
LFCI513-B



Insert/Corner  
6 x 6  
LFCI513-IC



Listel  
2 x 6  
LFCI513-L

CINNABAR



18 x 18 (17 1/2 x 17 1/2) LFCI514-18  
12 x 12 (11 3/4 x 11 3/4) LFCI514-12  
6 x 6 (5 7/8 x 5 7/8) LFCI514-6



Border  
6 x 18  
LFCI514-B



Insert/Corner  
6 x 6  
LFCI514-IC



Listel  
2 x 6  
LFCI514-L

NILE



BORDER  
4 x 12  
LFCI515-B\*

• Sizes in ( ) indicate nominal size. \*Coordinates with all five Cairo colors.

	Wall				Floor		
Trim	Quarter Rd	QR Angle	V-Cap	VC Corner	Bullnose	BN Corner	Bullnose
Size	3/4 x 6	3/4 x 3/4	2 x 6	2 x 2	6 x 6	6 x 6	3 x 12

• See back page for more details.